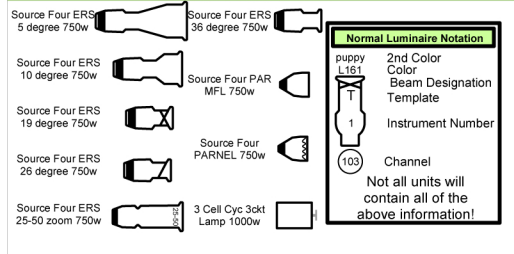
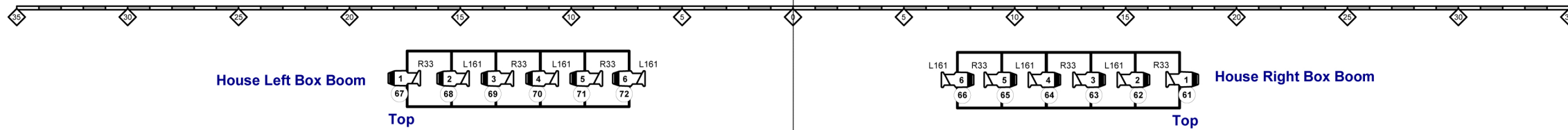
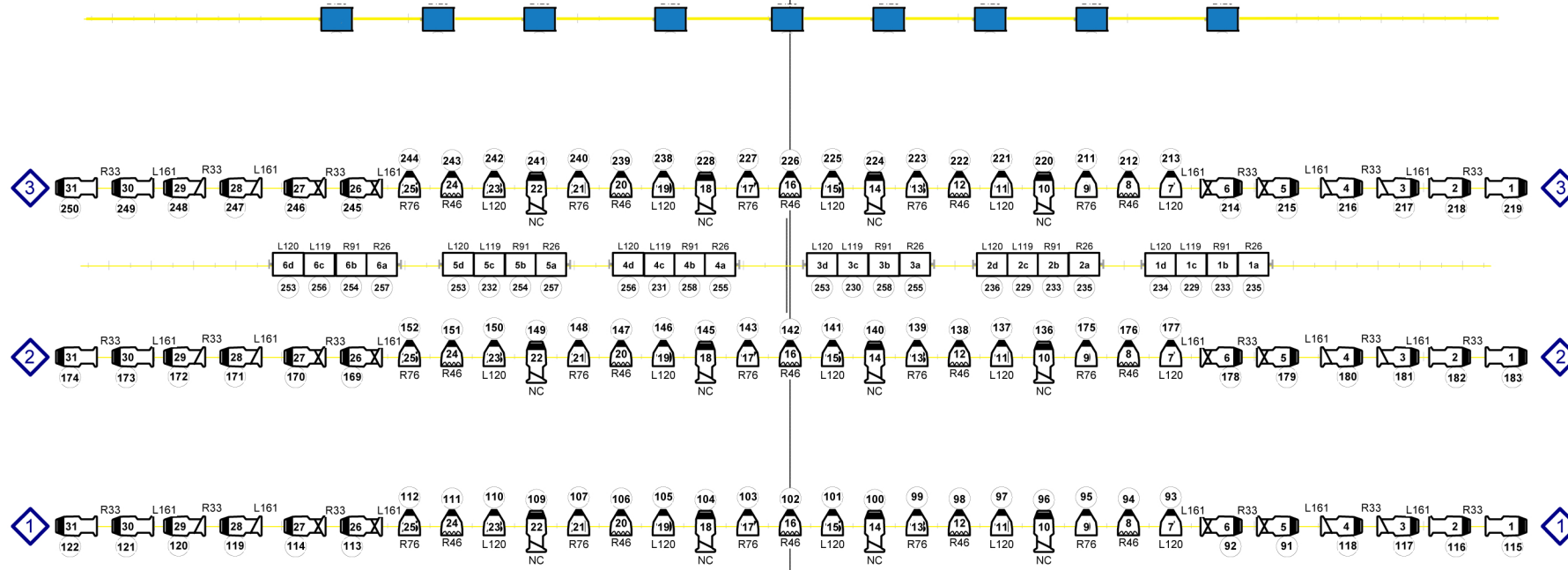


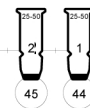
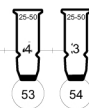
LIGHTING KEY



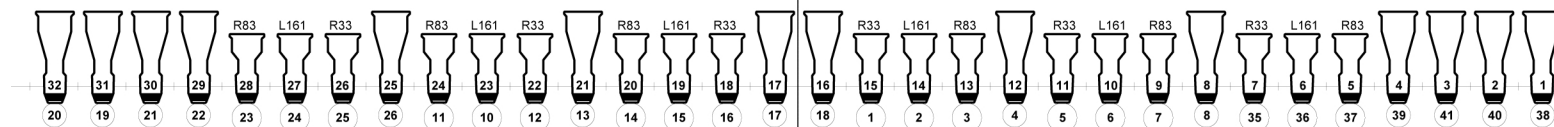
New LED Cyc Electric- ETC S4 Lustre +with Cyc Adapter - CH. 401 - 409



Balcony Rail



FOH POSITION



Lucas Theatre
Lighting Layout

Groundplan Lighting Layout 1 of 1

Technical Director: Joshua Lotz - jlotz@scad.edu

Scale: 3/16" = 1'-0" Date: 12/4/17 Drwn:reh Rev: 12/4/17